



Decarbonizing, Not Diminishing Returns

Sustainability Measures of a Successful Cruise Port

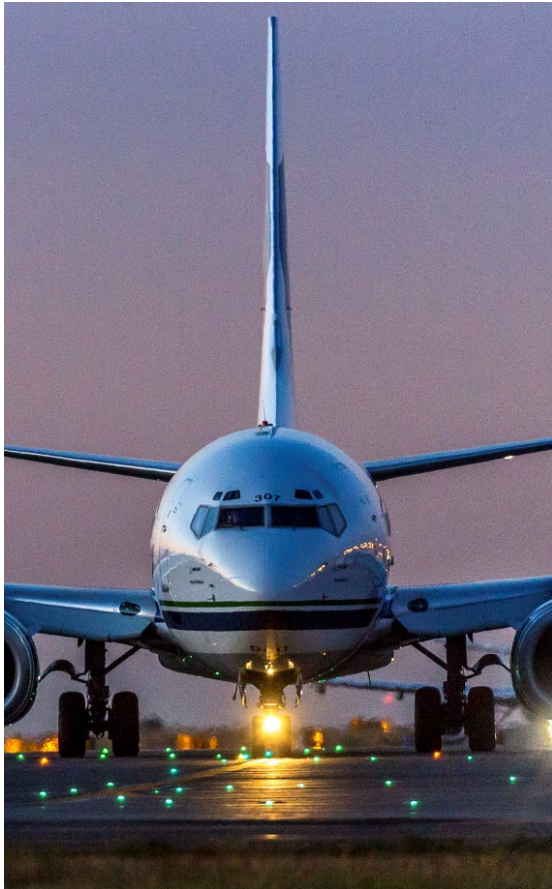
Stephen P. Metruck, Executive Director

Port 
of Seattle®

Port of Seattle | Washington State



Port of Seattle | Driving the Regional Economy



**SEA INTERNATIONAL
AIRPORT**

*11th Busiest Airport
in North America*



**INTERNATIONAL
CRUISE**

*Largest Cruise Port on
the U.S. West Coast*



**MARITIME CARGO,
CONTAINER, AND BULK**

*The Northwest Seaport
Alliance 7th Largest Cargo
Gateway*

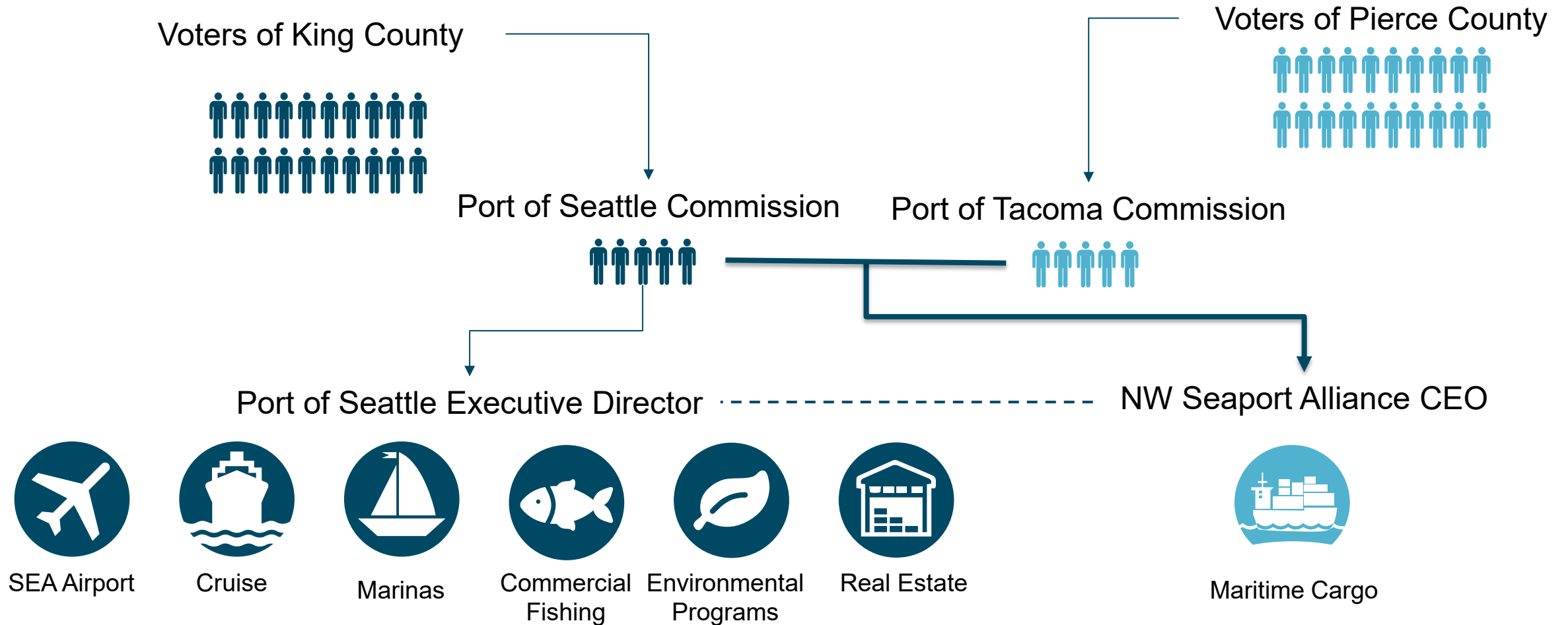
in North America



**FISHING, BOATING, AND
REAL ESTATE**

*Home of the U.S. North Pacific
Fishing Fleet*

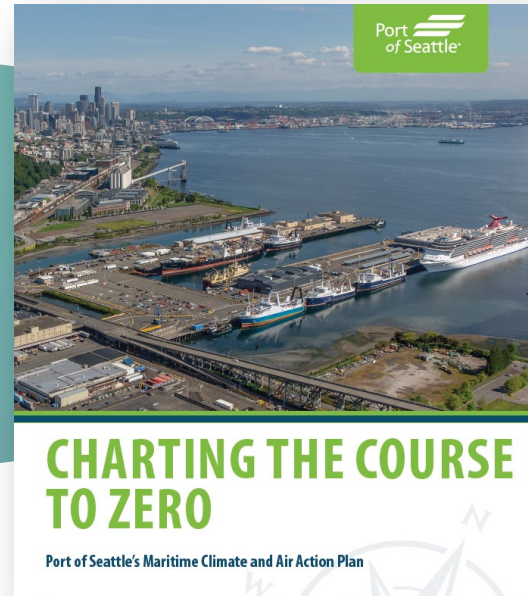
About the Port



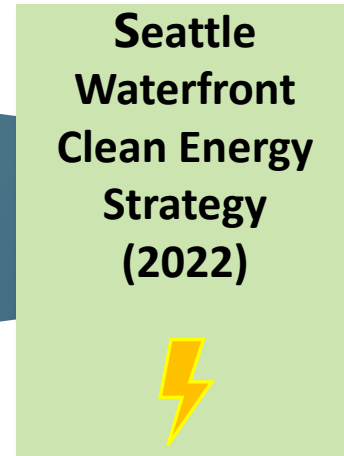
VISION: A Zero Emissions Port and Clean Energy Hub



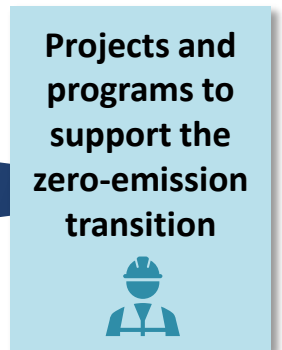
Sets vision to be zero-emission by 2050 with objectives shared by 4 Northwest Ports



The Maritime Climate and Air Action Plan (MCAAP) is Port of Seattle's Implementation Plan through 2030 with interim milestones



Early implementation action for Port of Seattle focused on the maritime infrastructure needed for decarbonization in Seattle



TBD from energy planning, ongoing community, industry engagement

Strategy

Implementation

Cruise Performance Dashboard

Welcome to the Cruise Port of Seattle!

Located in the Pacific Northwest of the United States, with a backdrop of Washington state forests sparkling Puget Sound, Seattle has been the natural gateway to Alaska for more than 100 years. [learn more.](#)



Terminal Directions and
Parking



For Cruise Passengers



Cruise En

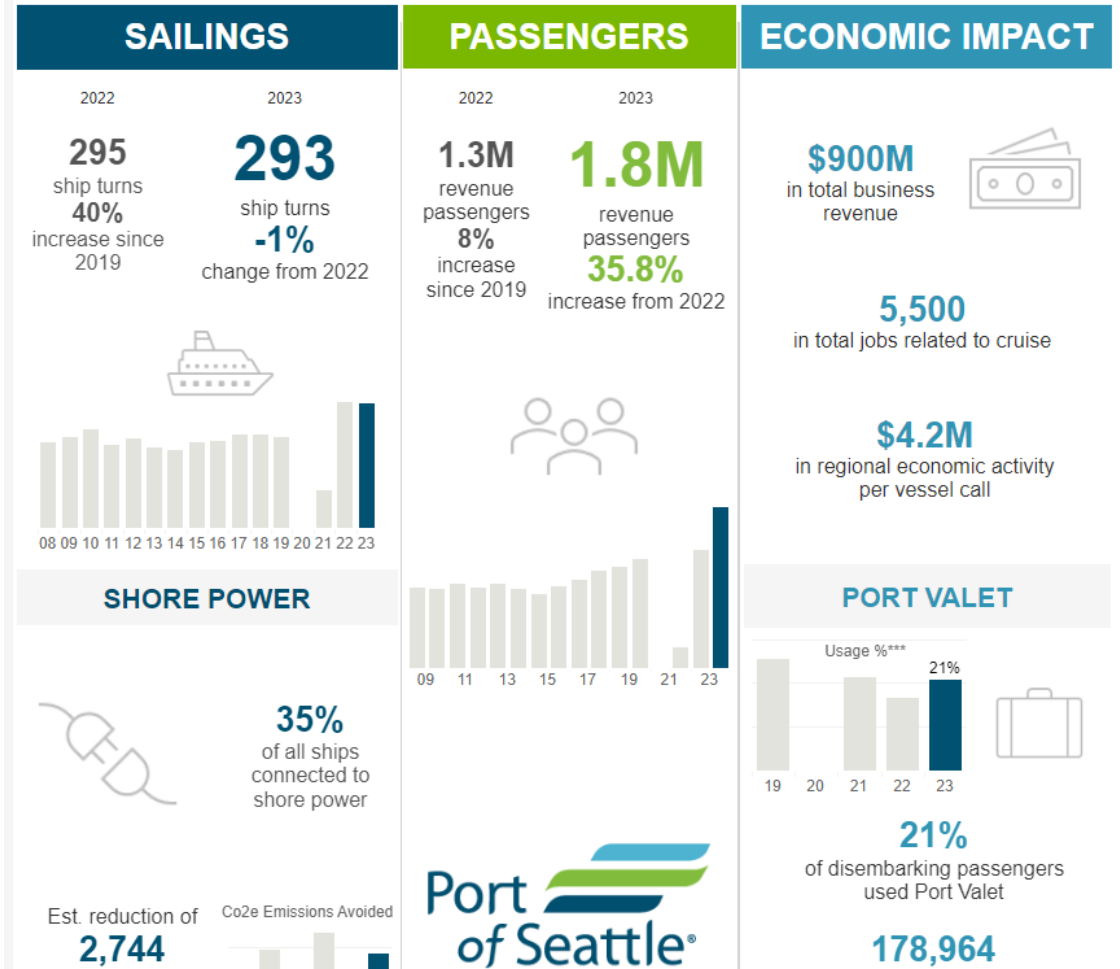


For Cruise Lines



Cruise Activity and
Performance Dashboard

2023 Cruise Statistics



Charting our Course to Zero Toward the Greenest Port in North America

NOW

- *Onshore Power*
- *Vessel Performance*
- *Green Corridor Feasibility, Clean Fuels and Clean Energy*

2030

- *100% Onshore Power*
- *Install Clean Energy Infrastructure*
- *Pilot Novel Propulsion*
- *Clean Maritime Fuels*

**50% reduction in all
seaport-related emissions**

**Zero-Emission
Seaport**

2050

Terminal 91



Pier 66



Terminal 5



Terminal 46



Terminal 30



Terminal 18



Currently Have Onshore Power



Future Onshore Power

Partnerships make the Green Corridor Possible

Alaska • British Columbia • Washington

**PACIFIC
NORTHWEST
TO ALASKA
GREEN CORRIDOR**

Government + NGOs



Vancouver Fraser
Port Authority



GLOBAL
MARITIME
FORUM

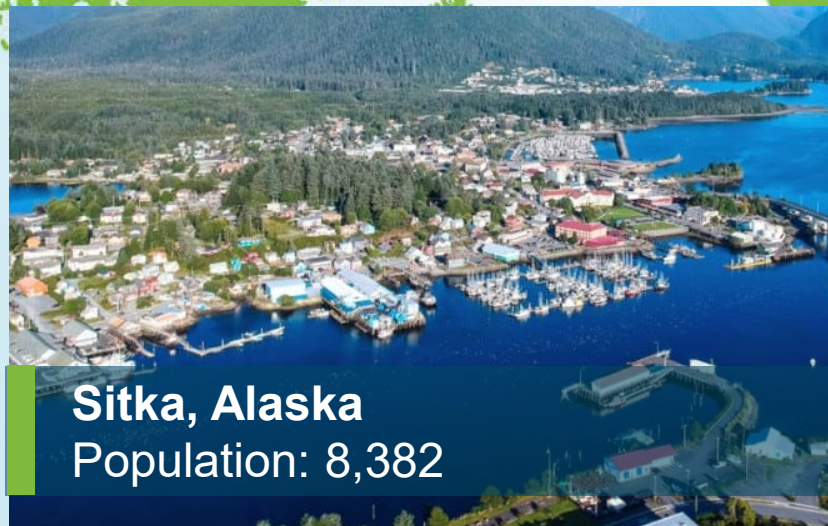


Ports of Call Lessons Learned *Alaska*

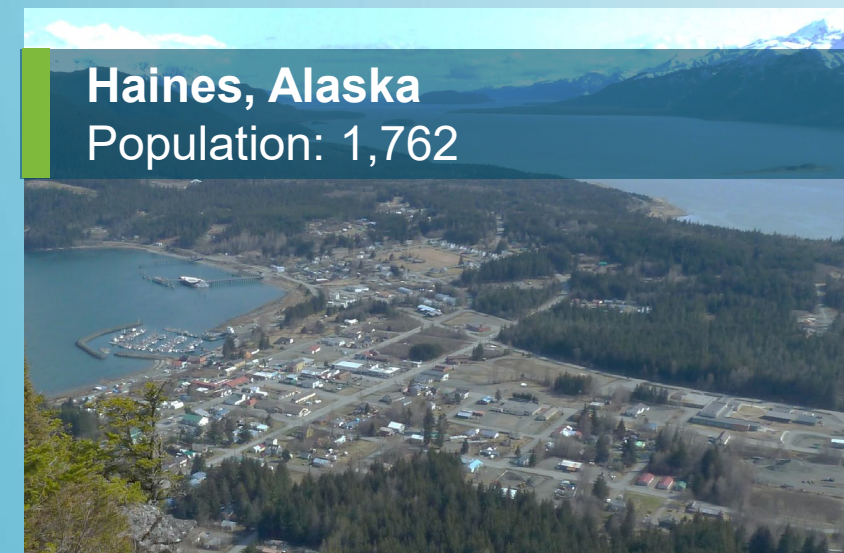
- Home Port
- Port of Call



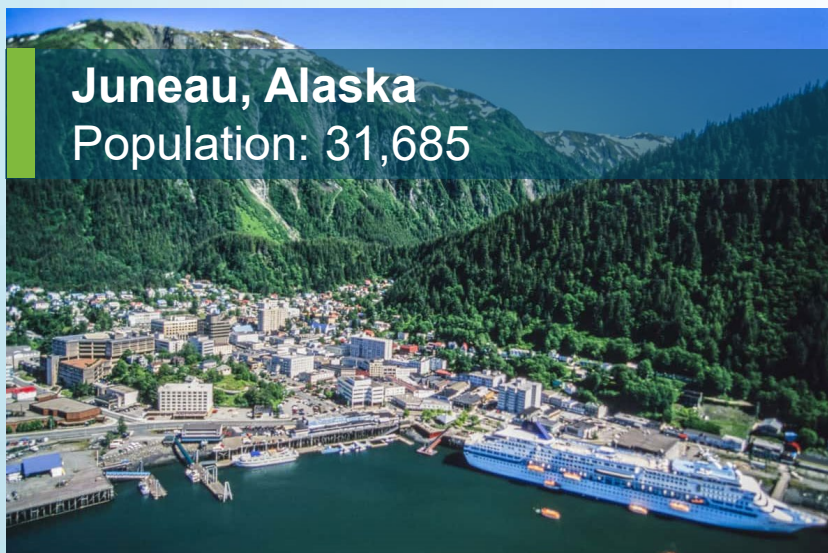
Skagway, Alaska
Population: 1,179



Sitka, Alaska
Population: 8,382



Haines, Alaska
Population: 1,762

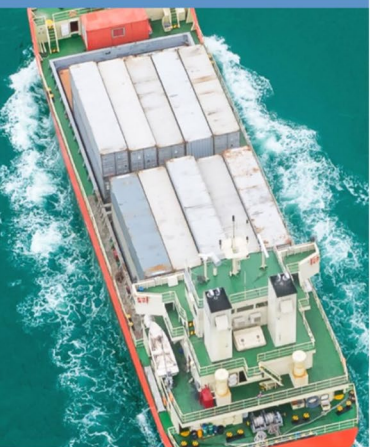


Juneau, Alaska
Population: 31,685



Recommendations/Lessons Learned

- **Be Aware of Changing International Policy**
- **Cultivate Partnerships**
 - Customer Service Approach
 - Trade Partners
 - Business Partners
 - Industry Associations: International Association of Ports and Harbors (IAPH)
- **Look for Opportunities**
 - Renewable energy (solar, wind)
 - Green Corridors



GREEN VOYAGE 2050

IMO GreenVoyage2050 is supporting shipping's transition towards a low carbon future.

Working with selected developing countries around the world, including Small Island Developing States (SIDS) and Least Developed Countries (LDCs), and partnering with maritime-related international associations, other UN organizations, and the industry, this global project is supporting the reduction of Greenhouse Gas (GHG) emissions from shipping, in line with the levels of ambition set out in the IMO GHG Strategy.

[Discover more on the project](#)

New opportunity for pilot project feasibility support

We are looking for Members States who are interested in receiving support to develop pilot project feasibility studies. Developing countries with proposals to deploy innovative GHG emission solution onboard ships and in ports can apply to receive assistance from GreenVoyage2050.

[Click here for the further details](#)

www.greenvoyage2050.imo.org

Thank you!

Port 
of Seattle®

