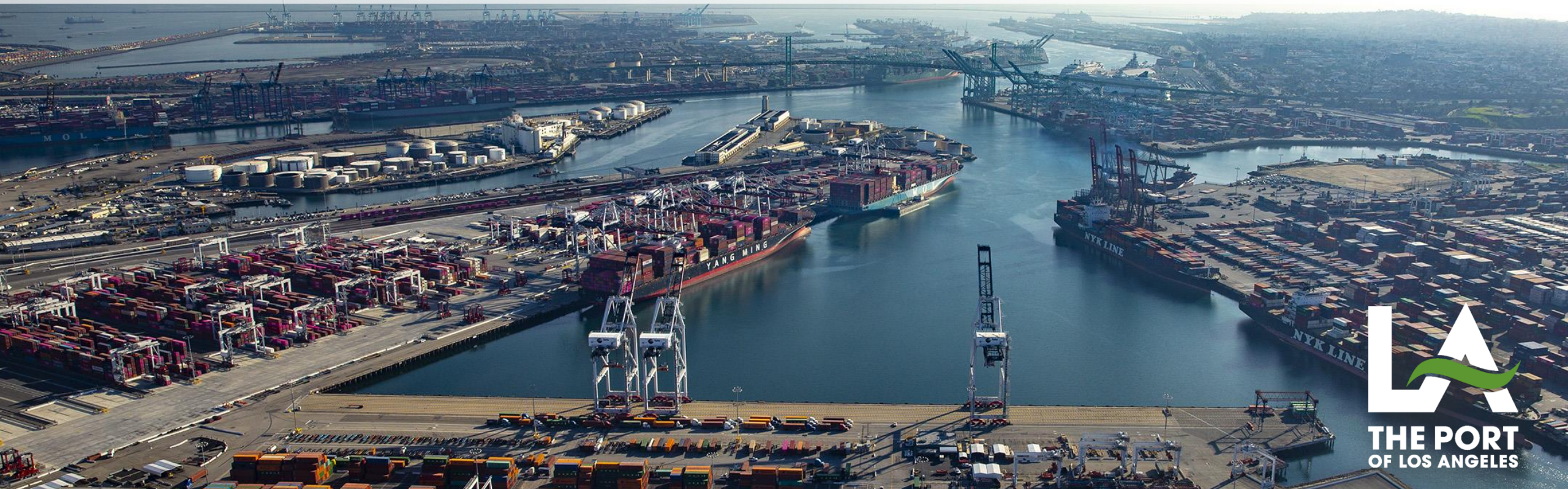




Port of Los Angeles Sustainability in the Cyber Age

Eugene D. Seroka | Executive Director | November 8, 2019



Wilmington

San Pedro Bay Port Complex



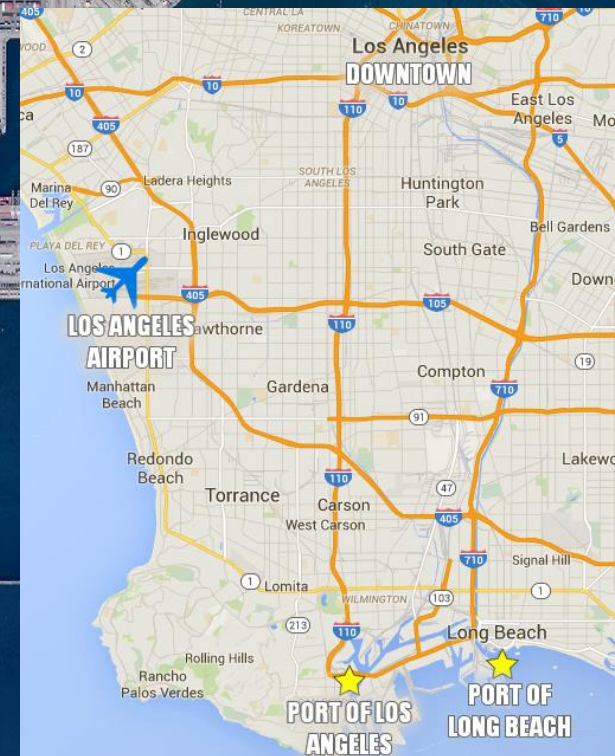
Downtown Long Beach

Port of Los Angeles

Port of Long Beach

Terminal Island

San Pedro



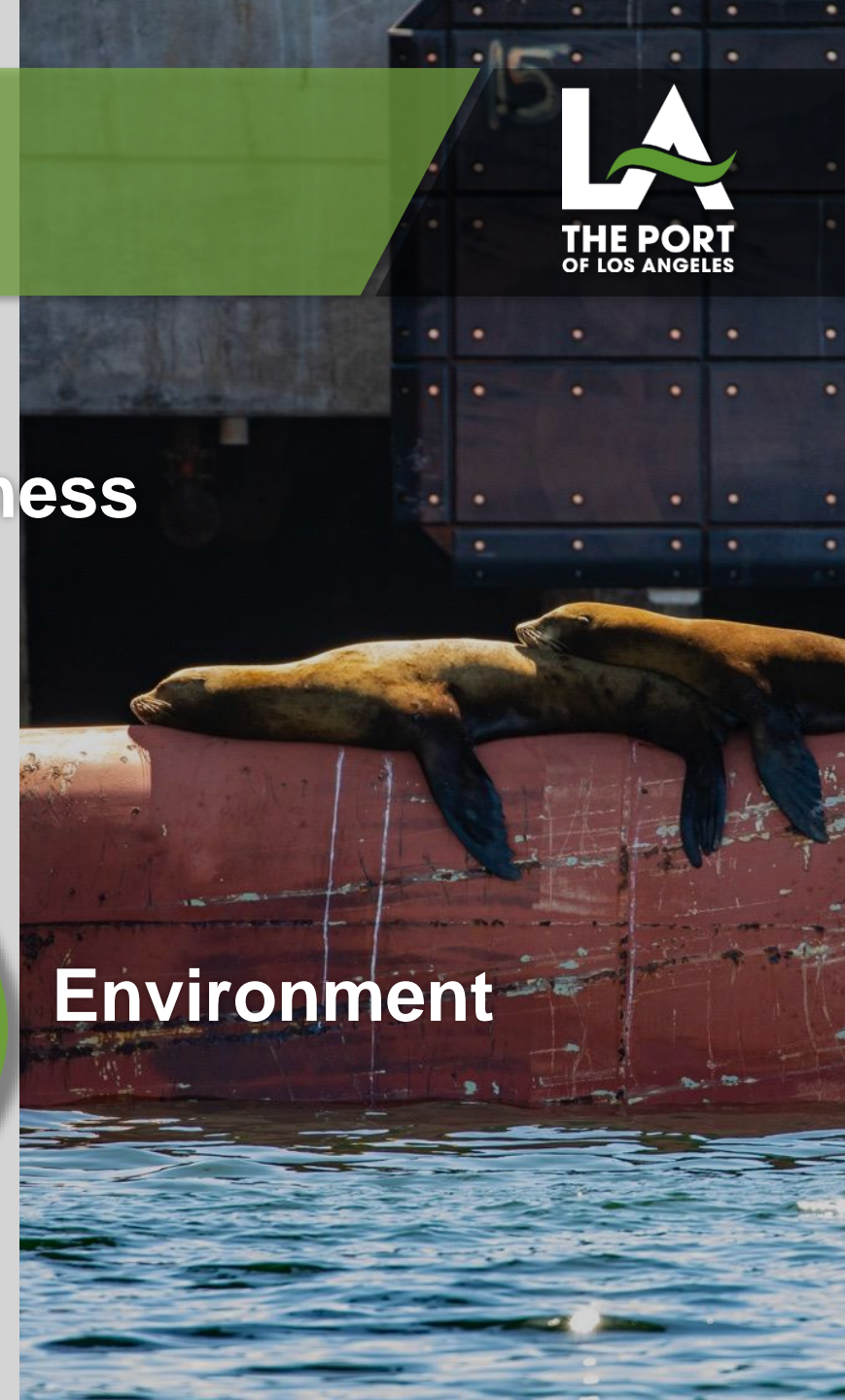
Sustainability Focus Points



Community



Business



Environment

Local, Regional & National Impacts

EMPLOYMENT

887

Actual filled positions at
the City of Los Angeles
Harbor Department

10-15k

Longshore and Terminal
jobs in Los Angeles and
Long Beach

190k

Jobs (about 1 in 12)
in Los Angeles and
Long Beach

992k

Jobs (about 1 in 9)
in the five-county region

2.8M

Jobs across the
United States

435

U.S. Congressional
districts touched by trade
(10,500+ companies)

TRADE VALUE

\$89.2B

Throughout California –
Via San Pedro
Bay Complex

\$312.3B

Throughout the entire
United States –
Via San Pedro Bay Complex

Focus: Cleaner Air (2005-2018)

Greenhouse
Gases

10%

Nitrogen
Oxides

60%

2023 Goal
59%

Diesel
Particulate
Matter

87%

2023 Goal
77%

Sulfur
Oxides
98%

2023 Goal
93%

Container
Volume

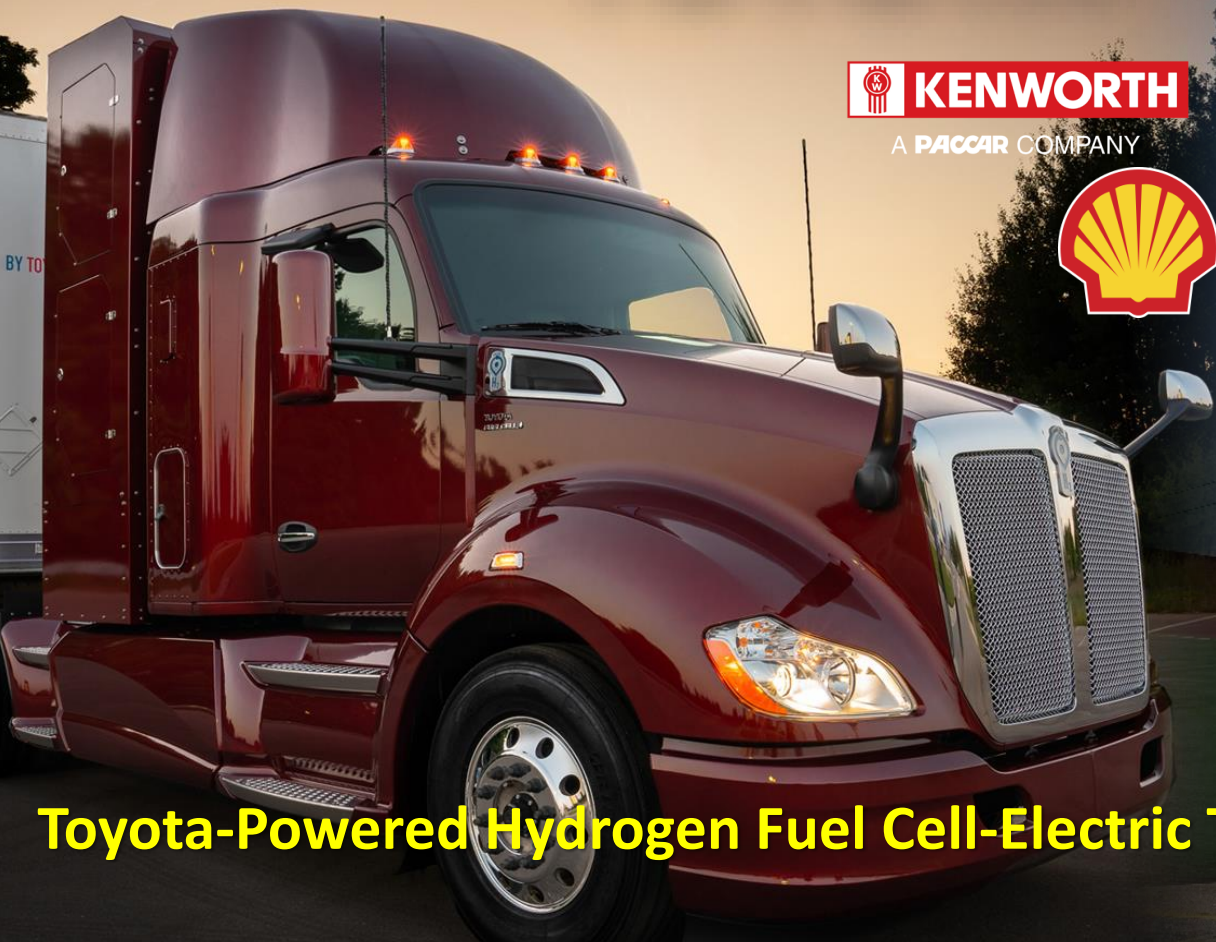
26%

Environment

Cleaner Port-Wide Operations



TOYOTA



Toyota-Powered Hydrogen Fuel Cell-Electric Truck



World's First All-Electric Top Handler

Community

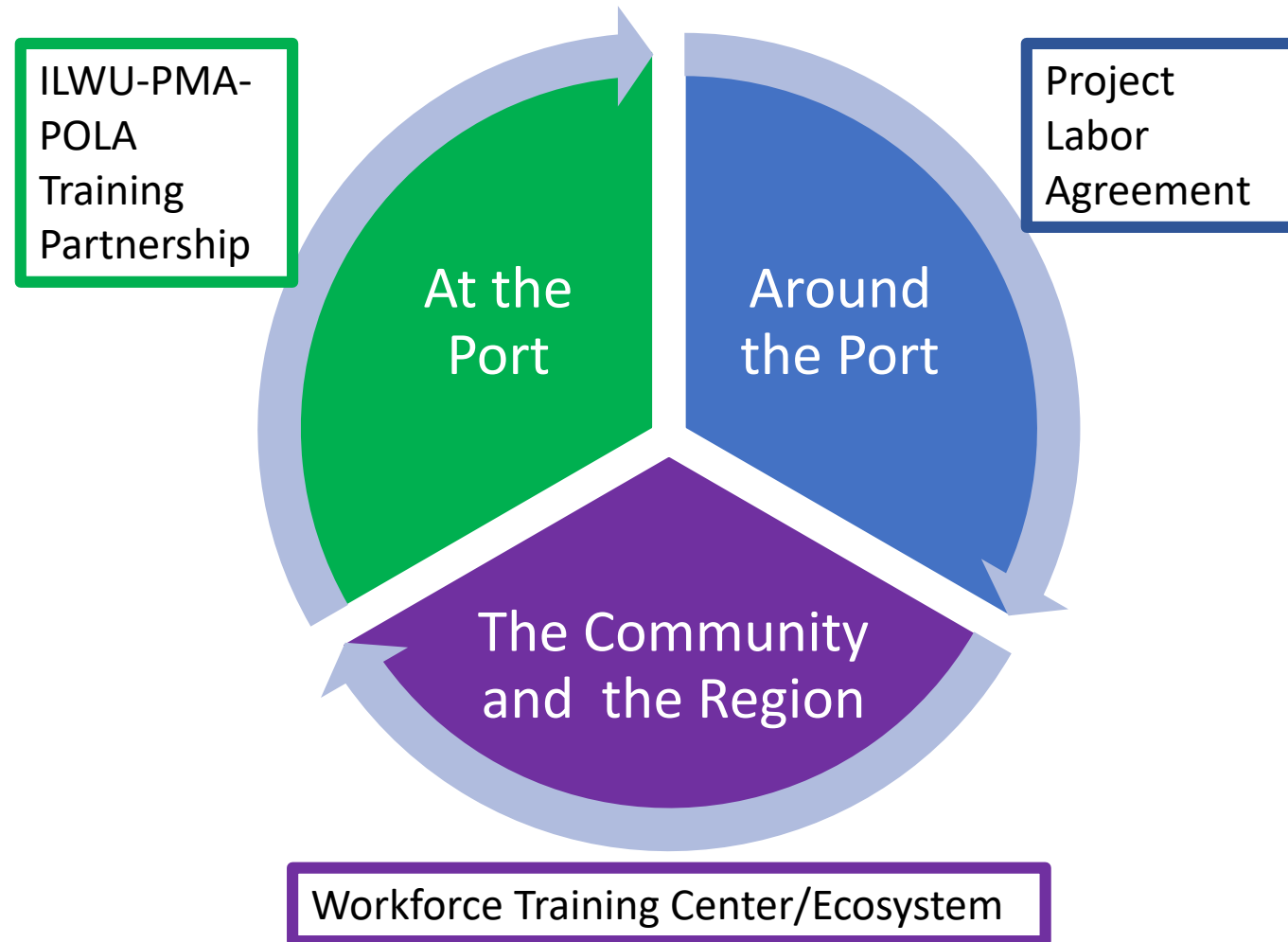
Workforce Development



The opportunity engine



Holistic Effort Toward Workforce Development



Los Angeles Sustainability PLAN



- **City of L.A.'s Sustainability PLAN**
 - Components align with Paris Climate Agreement goals
 - Commitment to adopting and achieving UN SDGs at local level (PLAN's 47 targets aligned to the SDGs)
- **Port Sustainability is critical to City's Sustainable PLAN objectives**
 - Securing clean air and water in stable climates
 - Environmental Justice
 - Zero Emission Vehicles
 - Prosperity and Green Jobs



Digital Strategy



GE Transportation
a Wabtec company



IIOT



Spectrum



Port Optimizer



Cargo Owner

Visibility + Cargo Velocity

- ↑ visibility for better customer service
- Better planning for dray partners → ↑ cargo velocity thru ports



Marine Terminal Op'r

Cargo Dwell + Cargo Velocity + Productivity

- ↓ container dwell
- ↑ velocity through better planning
- Reduced and improved handling (touches, etc)



Ocean Carrier

Visibility + Cargo Velocity

- ↑ velocity of cargo thru port
- ↑ velocity of empty returns



Motor Carrier

Turn Times + Productive Turns

- Faster truck turn times
- ↑ number of productive turns per day



Railroad

Rail Volume + Visibility + Speed

- ↑ rail volume through ports
- ↑ visibility to export dates
- Improved equipment planning
- ↑ speed of rail volume thru ports



Chassis Provider

Accuracy + Chassis Utilization

- ↑ accuracy of chassis inventory and forecast → ↑ chassis utilization
- Improved planning → ↑ chassis utilization

Enabling visibility and execution across an integrated supply chain

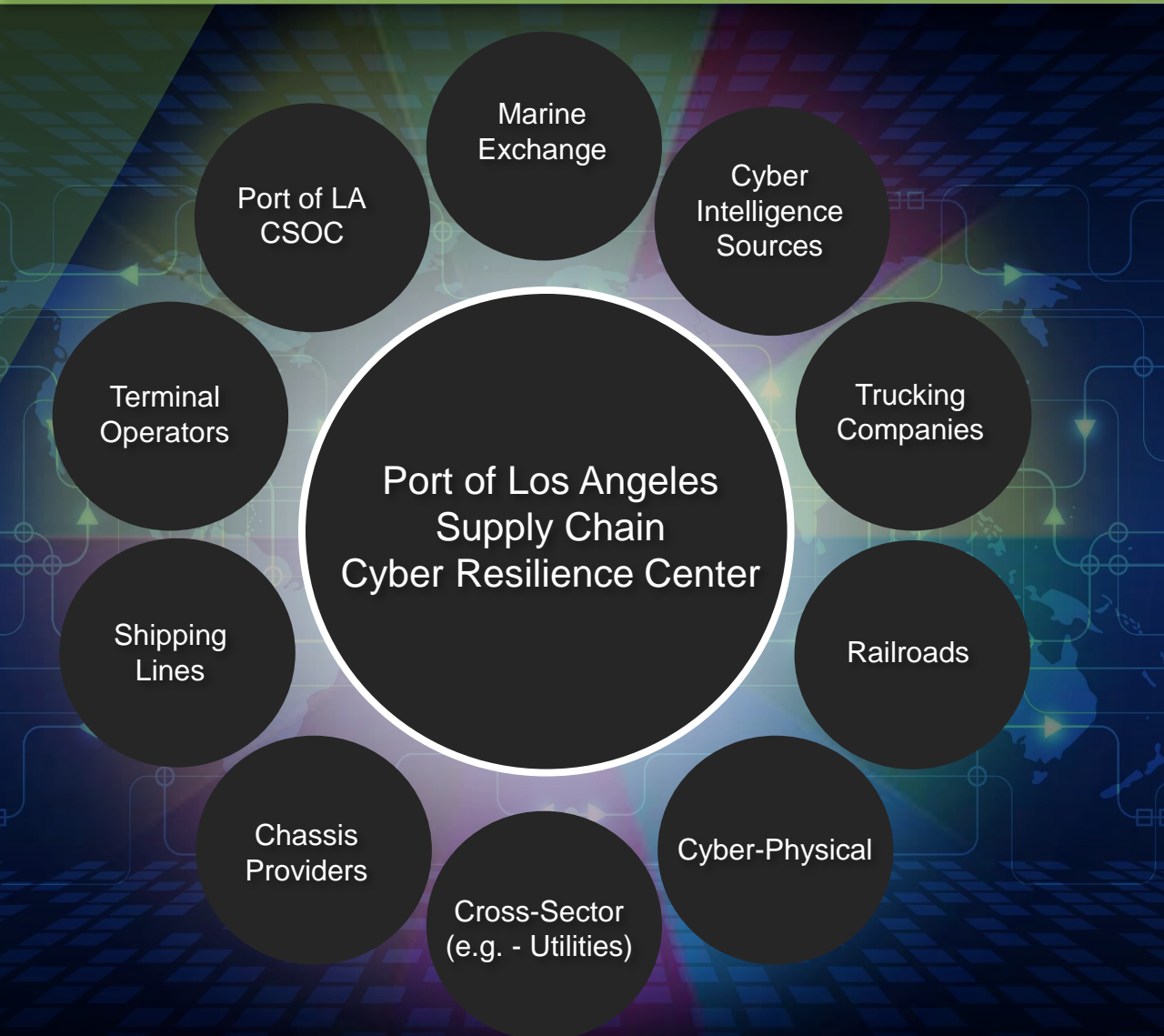


Port Cybersecurity Landscape

Cyber Security Operations Center (CSOC)



Cyber Resilience Center Overview



The **Cyber Resilience Center** concept provides a potential valuable service for the supply chain ecosystem

- Integrate and automate cyber security across the supply chain
- Enable cyber teams collaboration with allied partners in the maritime sector
- Reduce risk of a supply chain breach

THANK YOU

@PortofLA



portoflosangeles.org



**THE PORT
OF LOS ANGELES**