

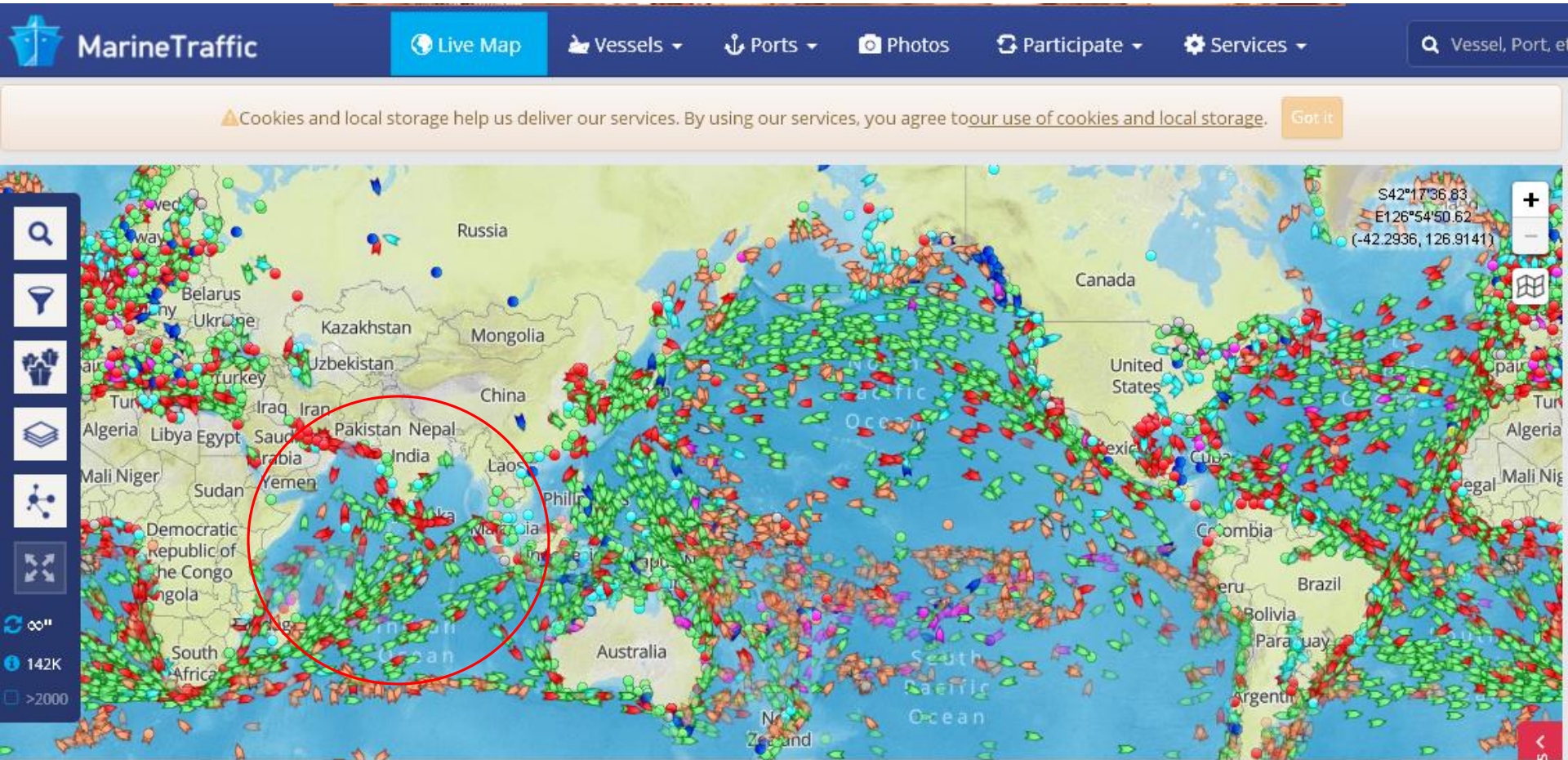
# **Cooperative Development of Port and Logistics Infrastructure**

**Upali De Zoysa  
Additional Managing Director  
Sri Lanka Ports Authority**

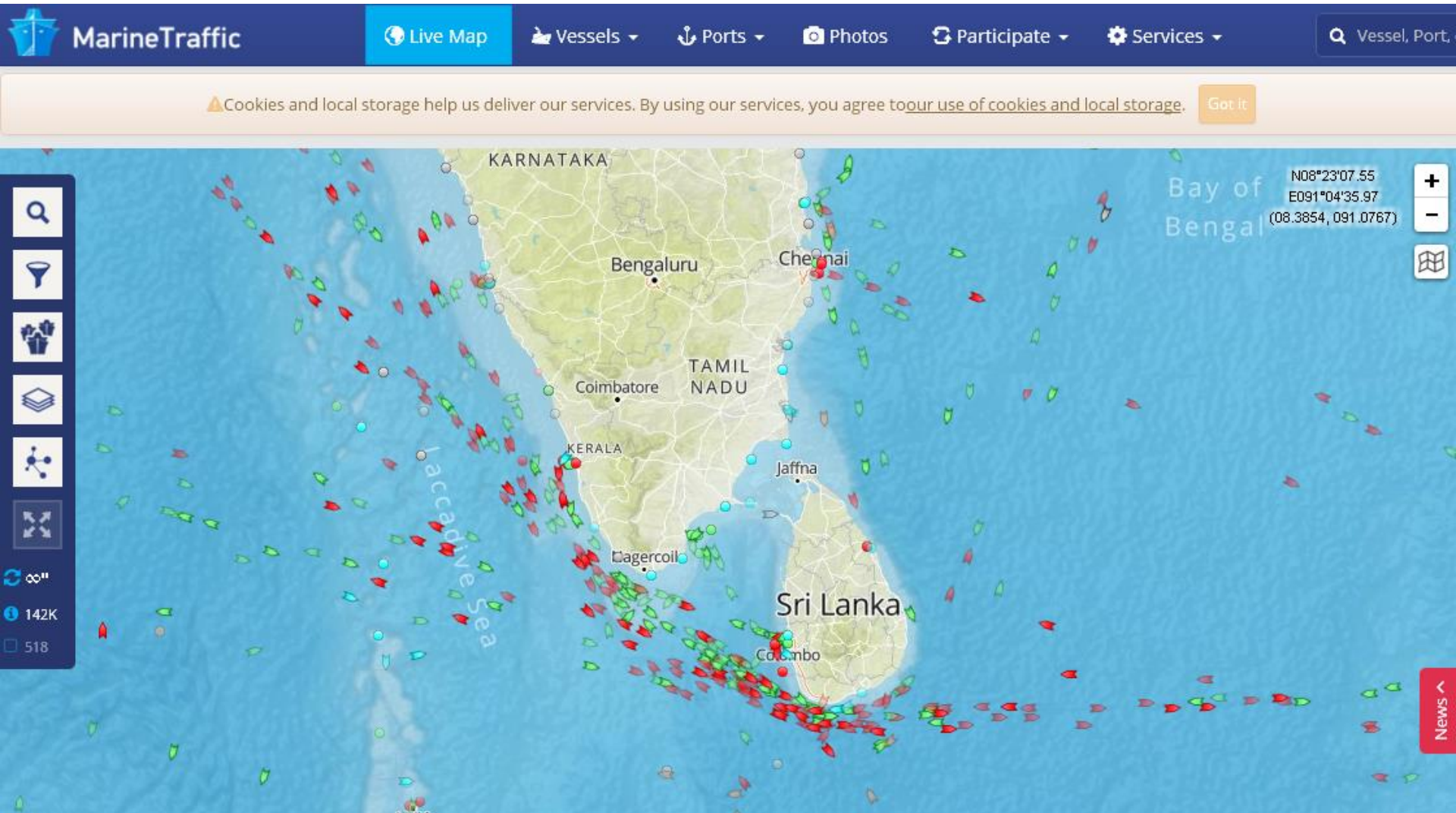
# Contents

- Where we are
- Development of Maritime and Logistics Policy Framework
- Development of Physical Infrastructure
- Development of Soft Infrastructure

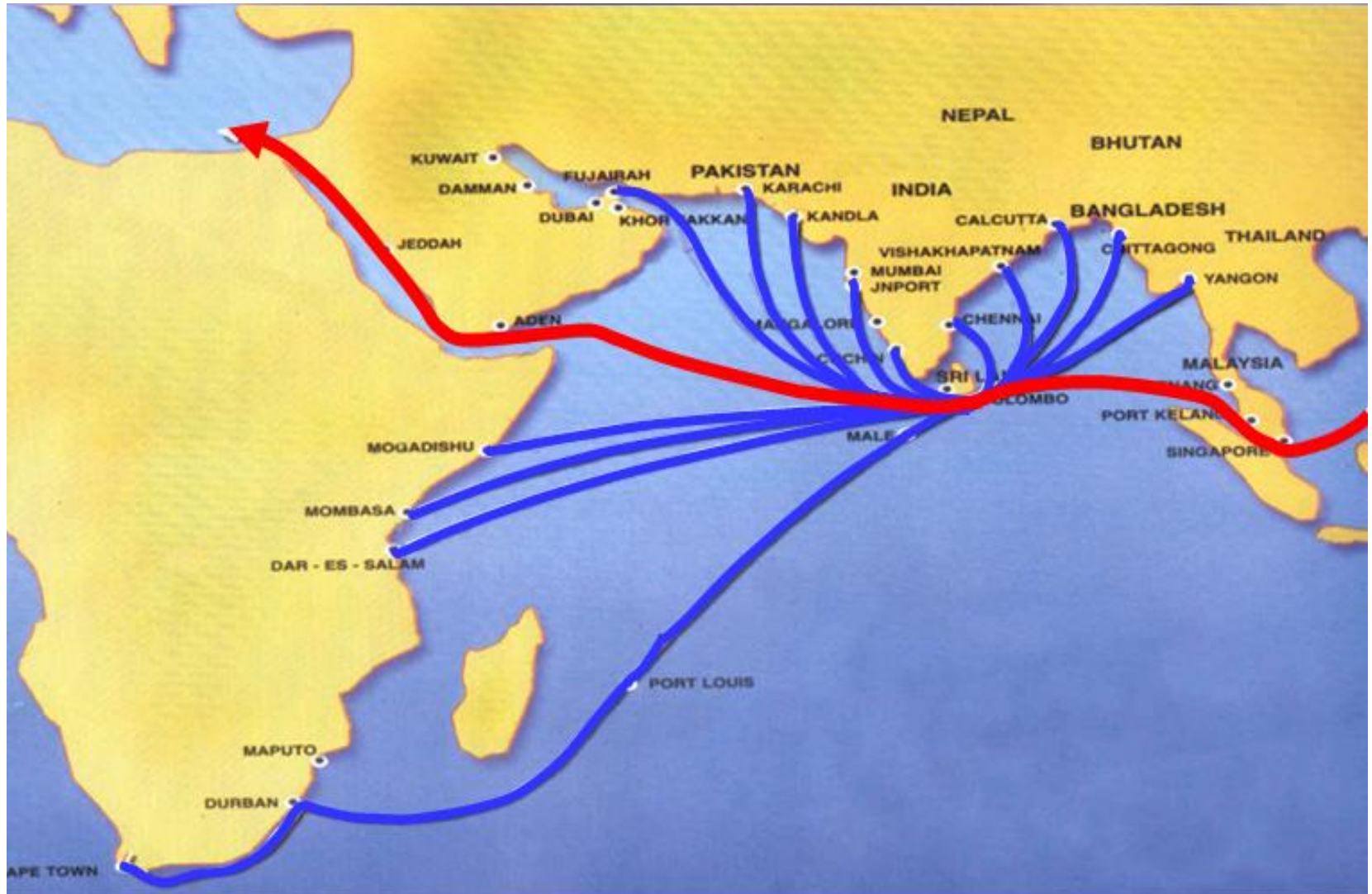
# Marine Traffic In the World



# Where we located,



# Strategic Location of Country in East West Shipping Route



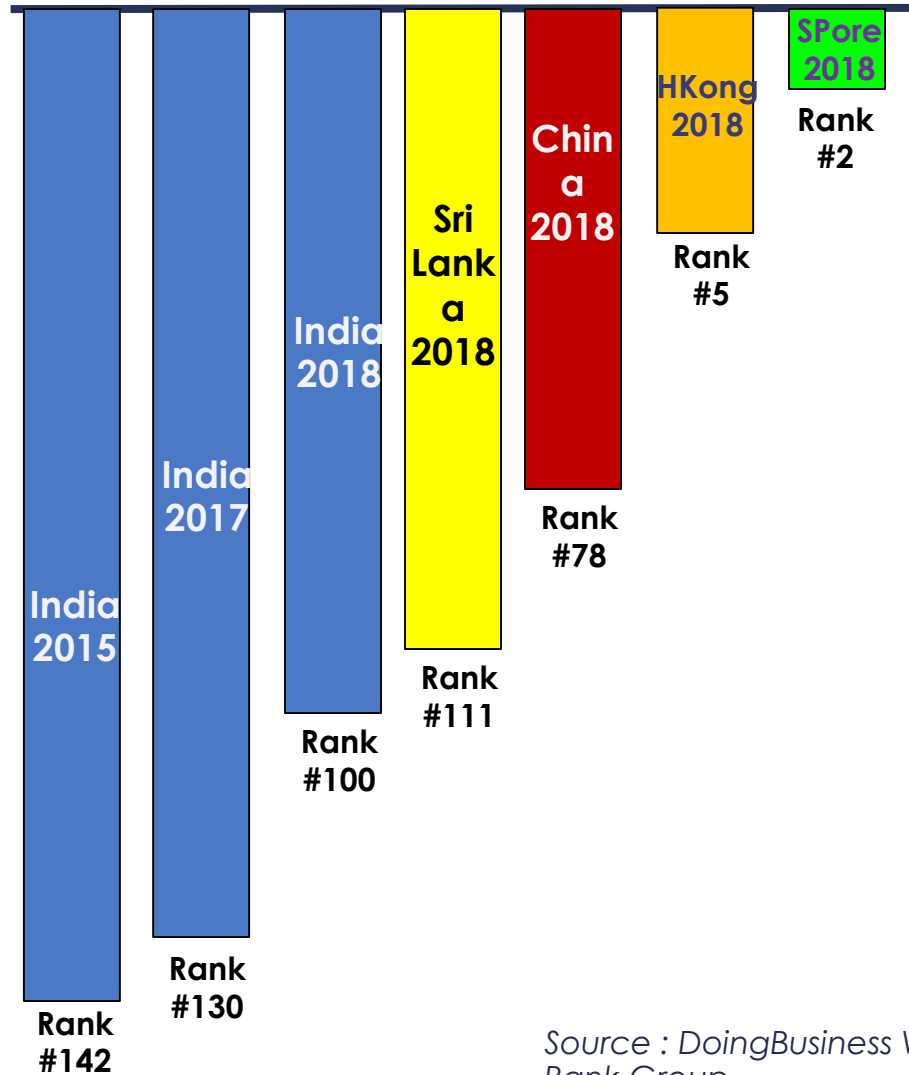
# Cargo Volume Growth of Colombo Port

Top 30 Ports - 1H 2018 container throughput vs 2017							
Rank	Port	1H 2018 TEU	Growth % 1H 18 vs 17	2Q 2018 TEU	Growth % 2Q 18 vs 17	1Q 2018 TEU	Growth % 1Q 18 vs 17
1 (1)	Shanghai	20,506,800	4.6%	10,767,000	5.0%	9,739,800	4.1%
2 (2)	Singapore	18,021,268	11.6%	9,156,644	7.2%	8,864,624	16.5%
3 (4)	Ningbo-Zhoushan	13,311,800	7.5%	6,818,300	5.2%	6,493,500	10.4%
4 (3)	Shenzhen	12,075,500	1.9%	6,104,400	-2.1%	5,971,100	6.4%
5 (6)	Busan	10,633,043	4.3%	5,512,057	4.0%	5,120,986	4.6%
6 (7)	Guangzhou	10,543,400	8.4%	5,609,900	7.2%	4,933,500	9.7%
7 (5)	Hong Kong	9,857,000	-3.8%	4,969,000	-7.5%	4,888,000	0.2%
8 (8)	Qingdao	9,381,200	3.2%	4,835,600	5.5%	4,545,600	0.7%
9 (9)	Los Angeles-Long Beach	8,262,066	4.1%	4,255,534	3.6%	4,006,532	4.7%
10 (11)	Tianjin	7,807,600	5.2%	4,206,100	3.3%	3,601,500	7.5%
11 (10)	Dubai	7,738,000	0.2%	3,912,000	-2.3%	3,826,000	3.0%
12 (12)	Rotterdam	7,077,406	6.2%	3,606,810	6.4%	3,470,596	6.1%
13 (13)	Port Kelang	5,875,909	-5.7%	2,942,871	-2.0%	2,933,038	-9.1%
14 (14)	Antwerp	5,567,905	8.3%	2,823,679	6.0%	2,744,226	10.7%
15 (16)	Kaohsiung	5,183,803	0.1%	2,622,379	2.3%	2,561,424	-2.1%
16 (15)	Xiamen	5,165,600	7.6%	2,673,900	4.4%	2,491,700	11.6%
17 (17)	Dalian	4,815,400	0.4%	2,601,100	0.2%	2,214,300	0.6%
18 (19)	Tanjung Pelepas	4,382,002	5.8%	2,198,075	4.3%	2,183,927	7.4%
19 (18)	Hamburg	4,355,000 <sup>(f)</sup>	-2.7%	2,194,863 <sup>(f)</sup>	-2.6%	2,160,137	-2.8%
20 (20)	Laem Chabang	3,946,211	4.9%	1,998,092	4.7%	1,948,119	5.1%
21 (21)	New York-New Jersey	3,450,469	6.8%	1,770,108	4.3%	1,680,361	9.6%
22 (23)	Colombo	3,415,298	15.6%	1,708,939	15.0%	1,706,359	16.2%
23 (24)	Jakarta	3,201,136	10.6%	1,567,453	14.8%	1,633,683	6.9%
24 (22)	Yingkou	3,120,100	1.6%	1,563,400	2.1%	1,556,700	1.1%
25 (25)	Ho Chi Minh City	3,110,070	7.1%	1,636,495	6.7%	1,473,575	7.5%
26 (26)	Bremerhaven	2,721,111	0.7%	1,375,629	4.8%	1,345,482	-3.2%
27 (27)	Tokyo	2,501,000 <sup>(f)</sup>	2.0%	1,266,784 <sup>(f)</sup>	-0.6%	1,234,216	4.7%
28 (28)	Valencia	2,498,384	6.4%	1,315,197	4.8%	1,183,187	8.1%
29 (30)	Nhava Sheva	2,482,050	6.9%	1,241,027	3.2%	1,241,023	11.0%
30 (29)	Lianyungang	2,377,900	0.1%	1,202,300	-3.1%	1,175,600	-0.8%

Highest Growth Rate of in World in 1<sup>st</sup> half of 2018

Rankings based on 1H 2018 throughput (Full year 2017 rankings in brackets) including transshipment, empty containers and restows.  
Volumes are as reported and are subject to revision.

## Ease of doing business : Global ranks



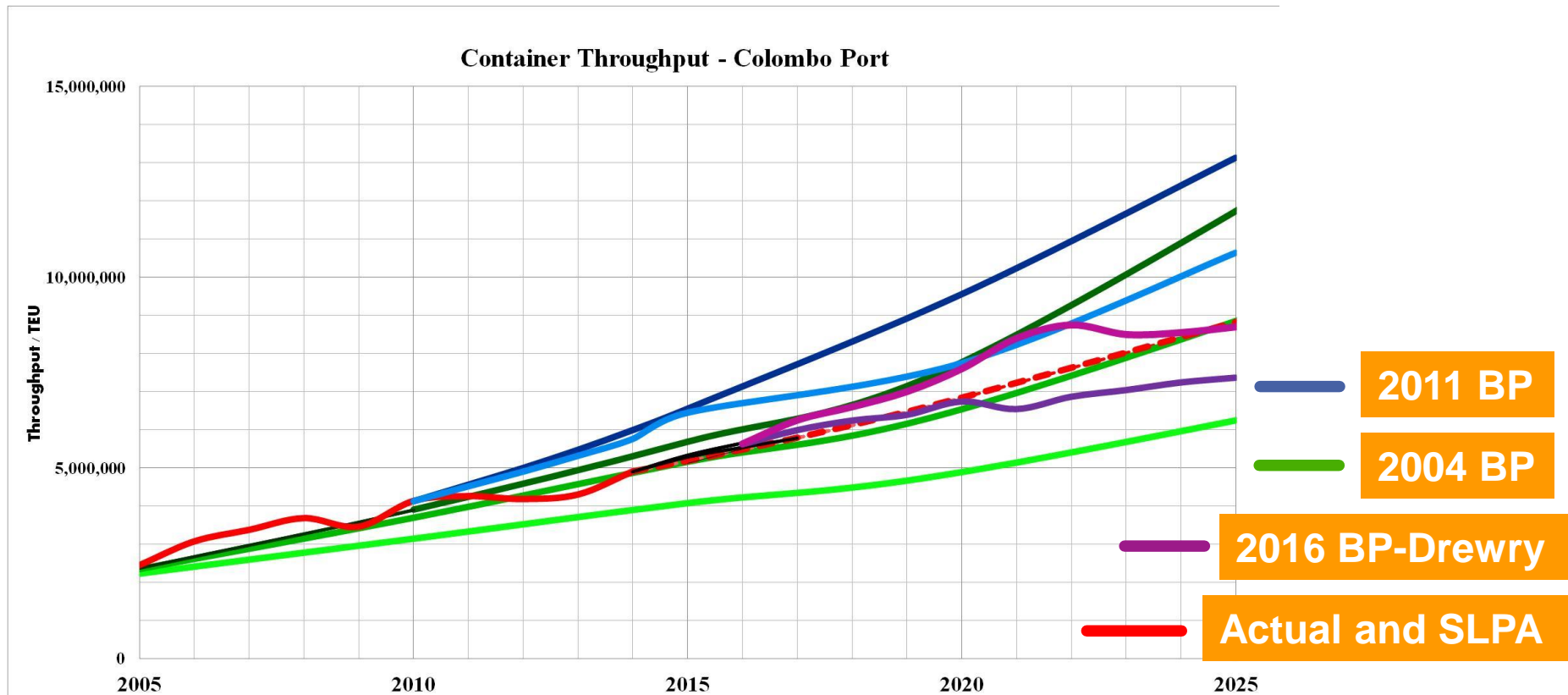
Source : DoingBusiness World Bank Group

# Logistics Performance Index (2018)

Country	LPI Rank	LPI Score
Singapore	7	4.00
Hong-Kong	12	3.92
China	26	3.61
India	44	3.18
Maldives	86	2.67
Sri Lanka	94	2.60
Bangladesh	100	2.60
Nepal	114	2.51
Myanmar	137	2.30
Bhutan	149	2.17

# Cargo Forecast for Port of Colombo- (TEU)

	2014	2015	2016	2017	2018	2019	2020	2021	2022	2023	2024	2025
Lower Case	4,907,915	5,186,247	5,480,715	5,792,260	6,121,876	6,470,617	6,839,597	7,229,997	7,625,194	8,023,501	8,423,113	8,822,111
Upper Case	4,907,915	5,271,511	5,662,842	6,084,046	6,537,427	7,025,468	7,550,845	8,112,445	8,701,053	9,311,785	9,943,279	10,608,809
Actual	4,907,915	5,187,869	5,734,923	6,209,068							In 2025 by SLPA	



# Customer Expectations

- Minimum Port Stay Time of Vessel
- Minimum Truck Turn around Time
- Deeper Draft Berth Facilities with higher profile Cranes/Equipment for Cargo handling
  - Containers
  - Conventional Cargo
- Sufficient space for Entre-pot Trade, Bonding Facilities, Value Addition Services, MCC operation and Cold Storage Facilities
- Customer oriented Productive, Efficient, Quality and Reliable World Class Services
- Better Connectivity
- Tariff concessions
- Elimination of non tariff trade barriers
- Ease of Doing Business
- Trade Facilitation

# Business Environment

- Merges, Acquisition and Alliances
- Technological Shift in Maritime Trade
- Evolution of Ship Building Industry
- International Trade Patterns
- Free Trade Agreements
- Government Policies
- Economic Policy Changes in leading economic giants and neighboring Countries
- One Belt One Road(OBOR) Initiative
- Kra-Canal Initiative
- Cabotage Relaxation by the Govt. of India
- Sagaramala Project
- Port & Logistics Infrastructure development in neighbouring ports

# Maritime and Logistics related Policy Framework Development

- Corporate Plan of SLPA
- National Port Master Plan
- National Maritime and Logistics Policy

We are partnering with,

- Trade Information Portal (TIP) under NTFC
- National Single Window (NSW) under NTFC
- National Export Strategy (NES) by EDB/MODSIT
- Time Release Study (TRS) of Sri Lanka Customs Collaboration with World Customs Organization (WCO)

# **Physical Infrastructure Development**

- South Port of Colombo expansion project
- Logistics Service Enhancement
- North Port Development
- Development plan of regional Ports

# Colombo Port Expansion Project (CPEP)

## Colombo South Harbour

### Phase 1

Breakwater – 6.8km  
Three Container Terminals

### **Navigational Data**

Channel depth 20m  
Basin depth 18m / Area 285ha  
Two way - channel & entrance

### **South Terminal - CICT**

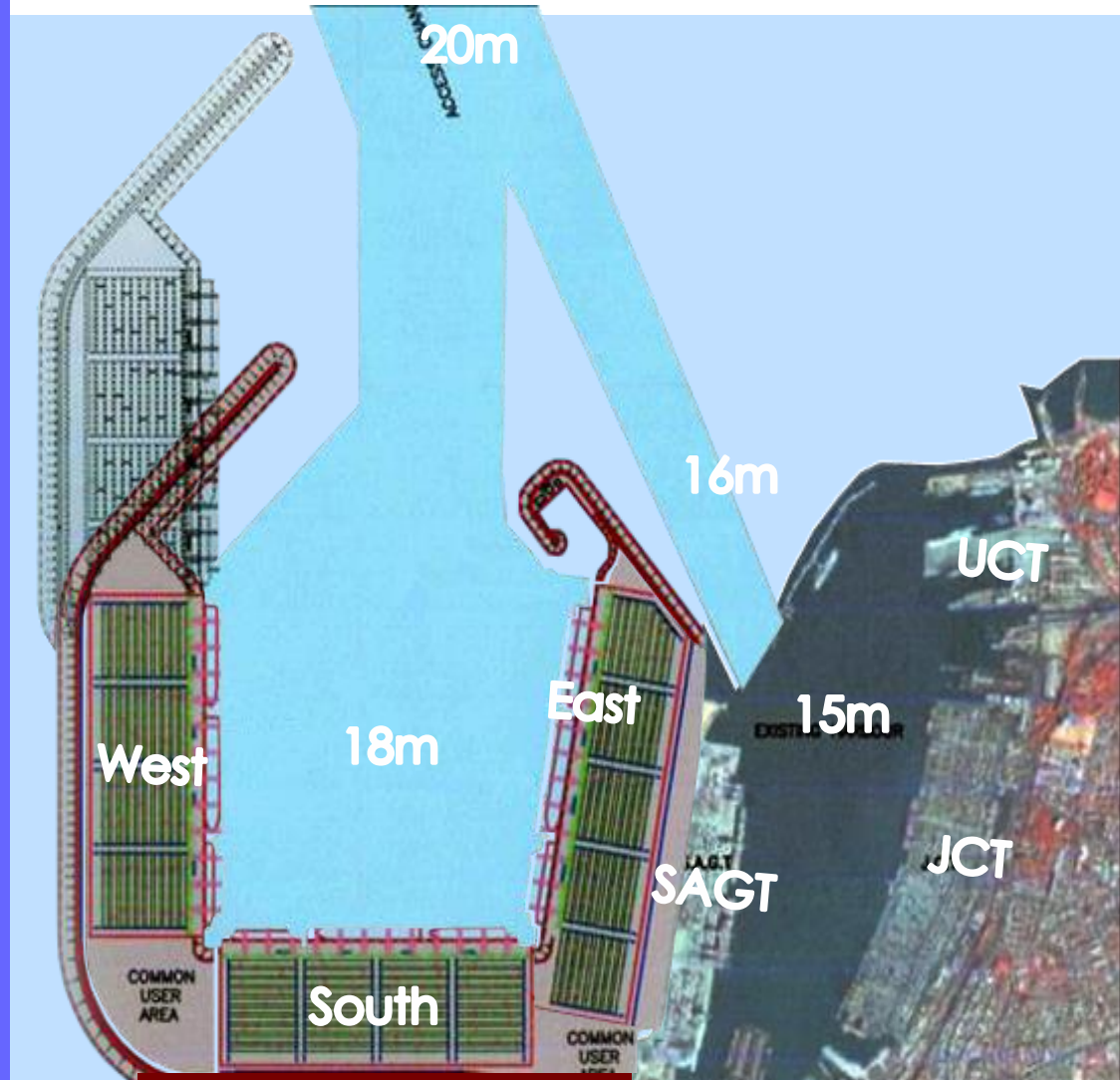
Three berths  
1,200m Quay  
Land area of 58ha  
Annual Capacity – 2.4m TEU'S  
Terminal cost - \$ 500 m  
PPP / BOT  
China Merchant 85% + SLPA 15%  
Fully Operational

### **East Terminal - SLPA**

Three berths  
1,200m Quay  
450m operational by 2016

### Phase 2

Extension of break water  
One Container Terminal

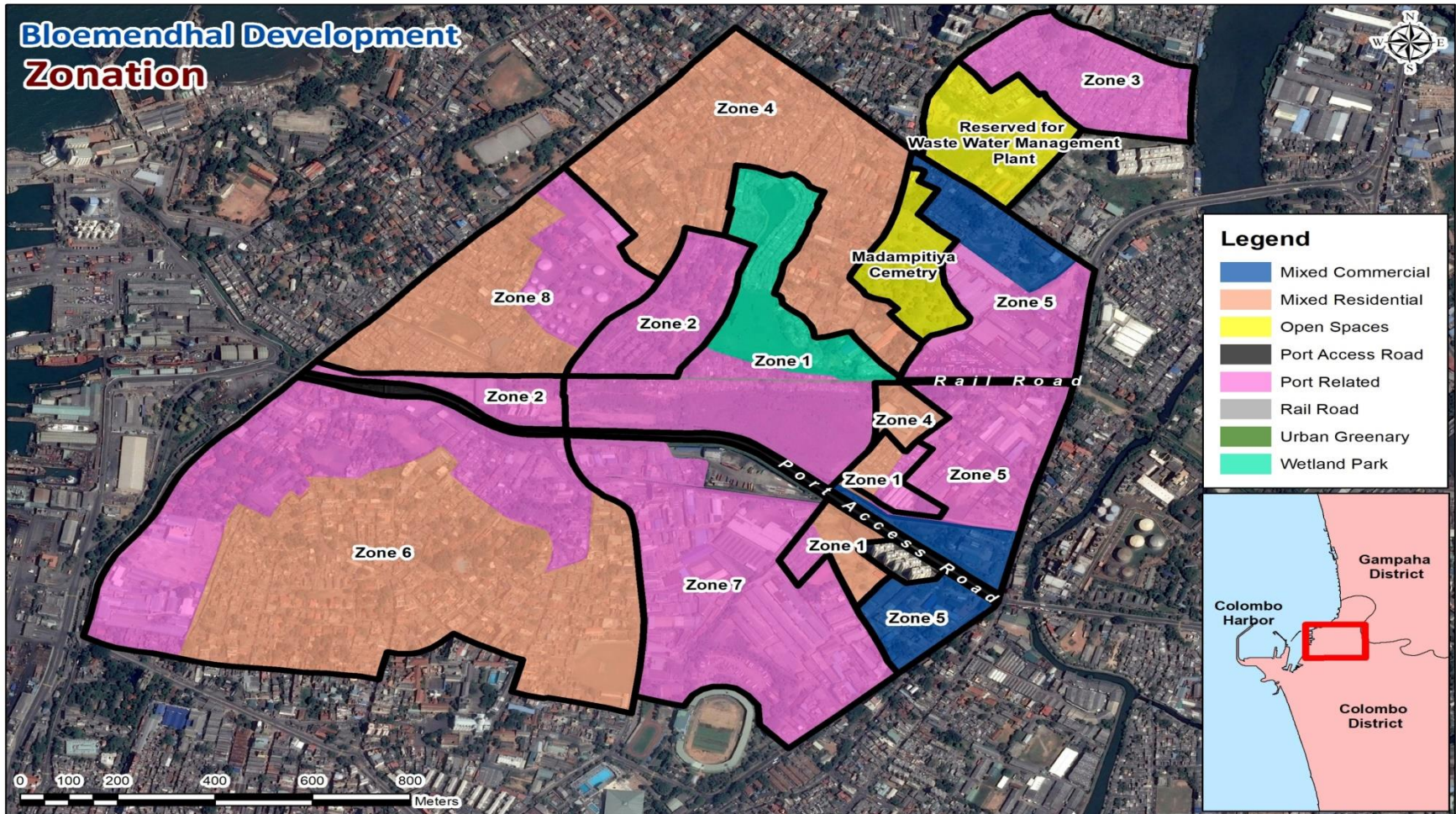


# East Container Terminal Development



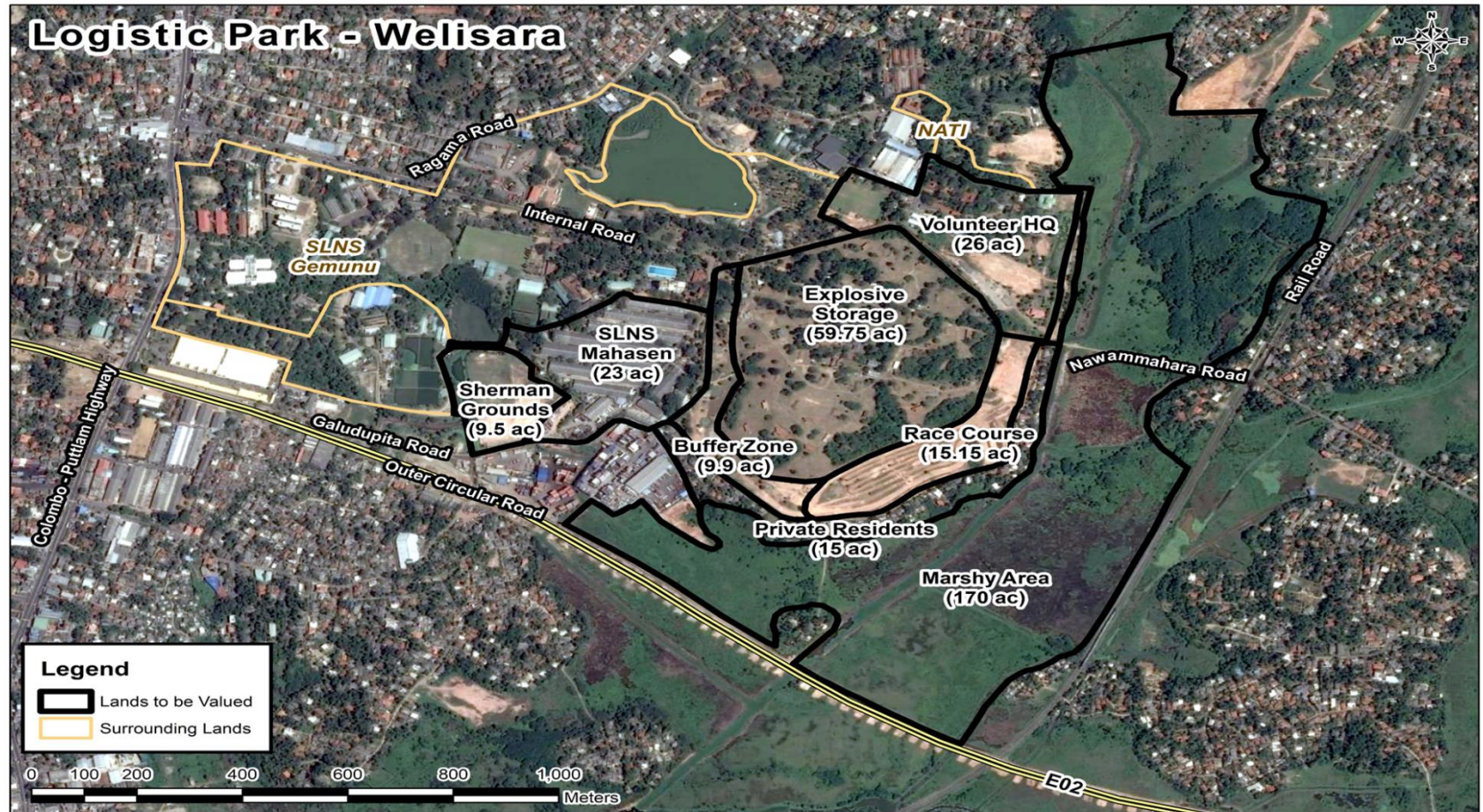
# Logistics Service Enhancement

## (Proposed Logistics Corridor Project in Bloemendhal by Ministry of Megapolis and Western Development)

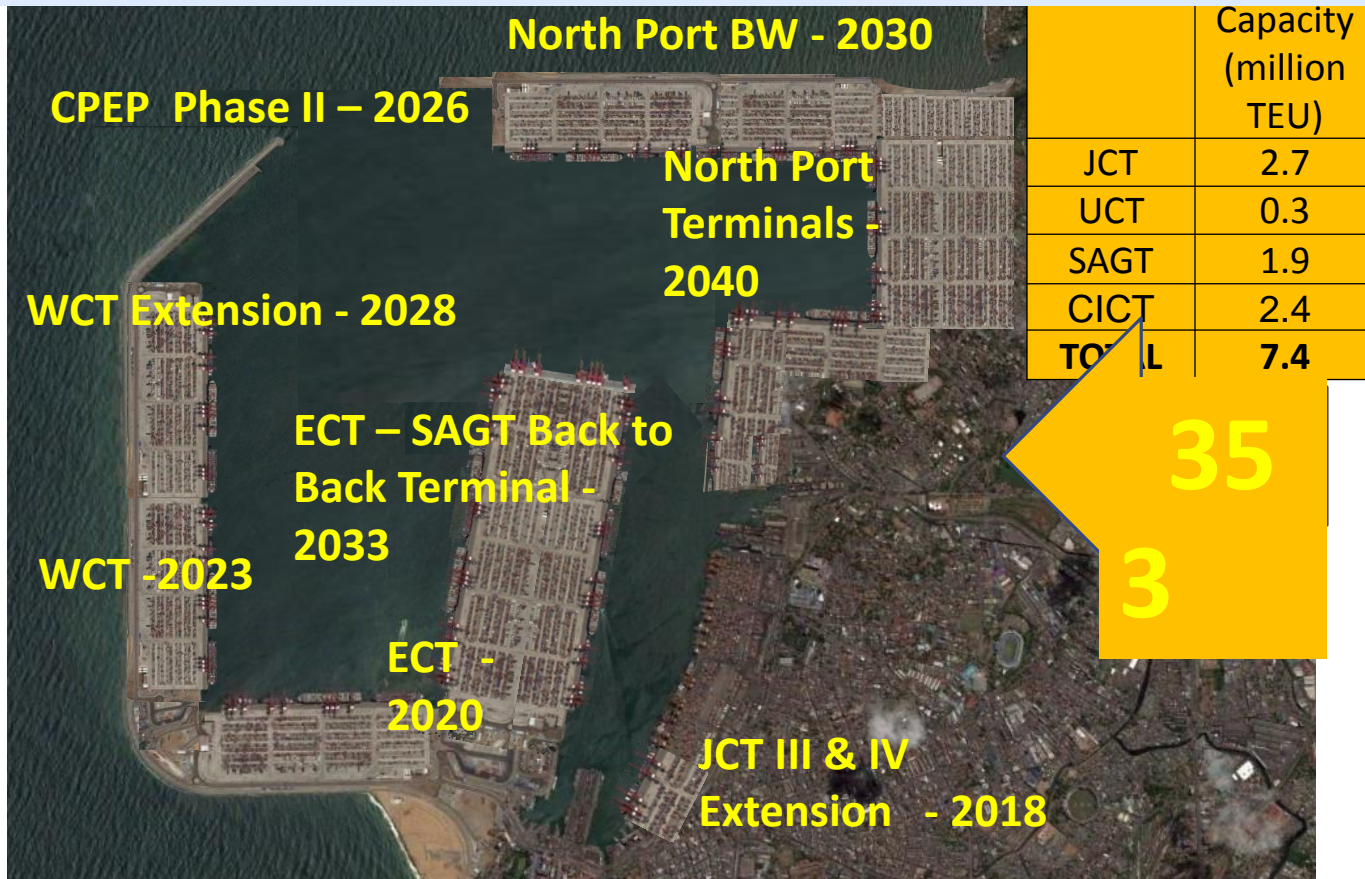


# Logistics Service Enhancement

(Proposed Dry Port in Welisara by Ministry of Megapolis and Western Development)



# PORT OF COLOMBO –Long Term Plan



# Development plan of regional Ports

**KKS**



**Trincomalee**



**Colombo**



**Oluvil**



**Galle**



**Hambantota**



# Soft/IT Infrastructure

- Upgrade of Container Terminal Operation System
- Link ASICUDA System with SLPA and related government agencies
- Implementation of Warehouse Management System
- Establish Paperless work environment by introducing E- Documents and E- Payments
- Smart Port Initiatives
- Port Community System

**Thank You**